

OPERATION, AND INSTRUCTION MANUAL



**Standard Lift
& Equipment, Inc.**



**STDML-10
STDML-10C**

**1000lb.
Capacity
Motorcycle
Lift**



DO NOT operate or repair this equipment without reading this manual and the safety instructions shown inside. Failure to understand how to safely operate this equipment could result in an accident causing serious injury or death

Installation and Setup

1. Remove Packaging material from the lift. The lift table should be on the bottom at this time. If it is not flip the lift over so it is up side down to complete assembly.
2. Remove the 90° fitting from the air cylinder wrap with Teflon tape and put install back into the air cylinder.
3. Attach 3/8" air hose to the 90° fitting on the air cylinder. Turn lift over so table is facing up. **Use care not to damage the air hose.**
4. Locate the foot pedal and the 1/4" x 3/8" air fitting. Wrap the non-flared end of the fitting with Teflon tape. Facing the foot pedal with the "up" casting furthest away from you and the "down" casting closest to you. Thread the air fitting into the right hand side of the foot pedal. Thread your attachment to the air source to the left side of the foot pedal. Put a few drops of air tool oil in to the foot pedal.
5. Make sure the foot pedal is in the "neutral" position half way between the "up" and "down" position on the foot pedal. Connect the foot pedal to a 100 PSI. air source. **Do not use air supply with pressure more than 100 PSI.**
6. Release the detent bar by pushing the handle down. Operate the foot pedal by stepping on the foot pad to raise the lift. The detent bar will engage the latch ladder while the lift is rising.
7. When the desired height is reached set the foot pedal to the "neutral" position to stop the lift. Set lift at nearest safety latch by moving foot pedal to the "down" position. **NEVER USE THE LIFT UNLESS THE DETENT BAR IS ON A SAFETY LATCH.**
8. Install the vise clamp using (4) M8 x 20mm bolts, lock washers and nuts. Install the fixed vise using (6) M8 x 20mm bolts, lock washers and nuts. Install the wheel stop using (2) M8 x 20mm bolts, lock washers and nuts.
9. Lubricate the cylinder rod with oil.

Safe Operation of Your Lift

1. Always center the load on the table – 1000lb. capacity.
2. Keep hands, tools, and debris from under carriage.
3. Detent bar should be latched at all times – except when lowering.
4. Do not ride vehicle on to lift.
5. Do not mount table when elevated.
6. Foot pedal should be at least 3 feet away from the lift during raising and lowering operation.
7. Vehicle must be properly secured on table before lifting.
8. Only trained persons should operate the lift
9. Air source should not exceed 100 PSI.
10. Do not leave air source attached to lift for an extended period of time.

Maintenance

- All moving parts should be lubricated every 6 months. Grease zerks are located at each end of the frame pivot shaft.
- Lightly oil cylinder rod when it becomes dry.
- Put a few drops of air tool oil through the air bleed hole in the plate end of the cylinder to lubricate the piston and seals every 6 months.
- Nuts and bolts should be checked frequently to make sure they are tight.

Standard Lift & Equipment, Inc. Limited Warranty

This warranty covers any defects in manufacturing on your Standard Lift Motorcycle Lift.

This warranty lasts five (5) years from the date of purchase on structural components and one (1) year on all pneumatic components including cylinder. Coverage terminates if you sell or otherwise transfer the motorcycle lift during the period of the warranty.

Standard Lifts and Equipment, Inc. will replace or repair at no charge any part found to be defective for the period of the warranty. You must pay any freight charges. Any labor charges are not covered by this warranty.

Any problem that is caused by abuse, misuse, or an act of God is not covered in this warranty. This warranty does not cover equipment when repairs or alterations have been made or attempted to the Manufacturers product. Standard Lift & Equipment, Inc. should not be liable in either tort or contract for any loss or damage, direct, indirect, special, consequential, or incidental, arising out of the use or inability to use this product. Some states or provinces do not allow the exclusion or limitation of incidental or consequential damages, so the above limitations may not apply to you.

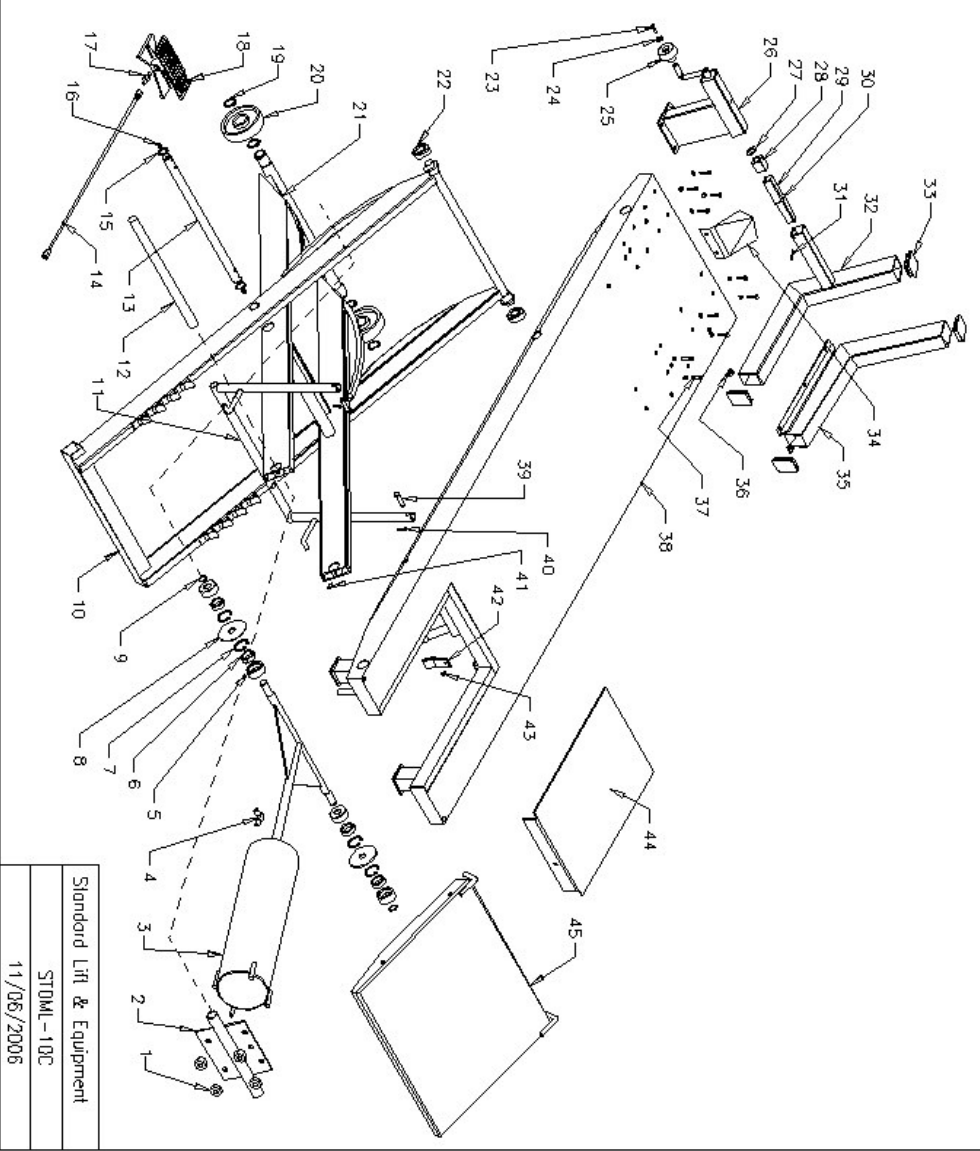
For warranty claims contact Standard Lift & Equipment, Inc.

Standard Lift & Equipment, Inc.
417-678-3070

If it is necessary to return the equipment for repairs Standard Lift & Equipment, Inc. equipment must be properly packaged and all transportation costs must be prepaid. Defective parts replaced at no charge must be returned freight prepaid to Standard Lift & Equipment, Inc. within sixty (60) days of the date the replacement parts are shipped or replacement parts must be paid for at the current selling price.

THIS WARRANTY GIVES YOU SPECIFIC LEGAL RIGHTS AND YOU MAY ALSO HAVE OTHER RIGHTS WHICH VARY FROM STATE TO STATE OR PROVINCE TO PROVINCE.

INDEX NO.	DESCRIPTION	QTY
1	M12mm NUT	4
2	AIR CYLINDER BLOCK ASSY	4
3	AIR CYLINDER	1
4	1/4 SPRING FITTING	1
5	AIR CHAMBER ROLLER BEARING	4
6	AIR CYLINDER ROLLER BEARING	4
7	RETAINING RING 42mm	4
8	13/16x3 1/2 WASHER	2
9	RETAINING RING 20mm	2
10	OUTSIDE BRAKE ASSY	1
11	DETEND BAR	1
12	AIR CYLINDER PIN	1
13	FRAME PIN	1
14	3/8 AIR HOSE 77 1/8 LG.	1
15	RETAINING RING 25mm	2
16	M6 GREASE FITTING	1
17	1/4x3/8 STRAIGHT FITT.	1
18	FOOT VALVE	1
19	RETAINING RING 34mm	4
20	WHEEL BRAKE ASSY	2
21	INSIDE BRAKE BEARING	2
22	WASHER	2
23	1/4x2 WASHER	1
24	LEAD SCREW BOX	1
25	3/4x1 1/4 WASHER	1
26	ADJUST BLOCK	1
27	TUBE	1
28	OIL RING	1
29	5x40mm ROLL PIN	1
30	PORTABLE VISE	1
31	PLASTIC CAP	1
32	BRAKE BRACKET	4
33	FIXED VISE	1
34	PLASTIC PAD	1
35	M8x20 BOLT	12
36	DETEND BAR PIN	2
37	3/16x2 1/2 CUTTER PIN	2
38	M6x12mm SCREW	2
39	DETEND CL BOLT	2
40	DROP OUT COVER	1
41	APPROACH RAMP	1
42		1
43		1
44		1
45		1



Standard Lift & Equipment
 STOML-10C
 11/06/2006