



Standard Auto Lift & Equipment Inc

Please call **1-888-839-8899**

MODEL STDA-7000XLT produced in USA

We are offering FREE with the purchase of this lift the Jack Tray and 3 Drip Trays*.

With all the great features of our STDA-7000ST, the 10" taller and 20" longer STDA-7000XLT is designed for use with light duty trucks and SUV. Vehicles up to 77" tall fit easily under this lift. With the 180" long runways, extended cab trucks and other long wheelbase vehicles fit right on for safe and easy lift.

Feature:

- Produced in the USA
- Made with North American Steel
- Powder coat finish
- SPX power unit
- 7,000 lbs. lift capacity
- 19" wide diamond tread runways formed from 3/16" steel
- 180" Extra Long Runways
- 98" Extra Wide Drive Thru Clearance
- 82-1/2" Overall Lift Height
- 14,000lb. capacity aircraft quality cables
- 3" diameter hydraulic cylinder located under the runway
- 12 locking positions
- Single point safety release
- Operates on 110v power



Specifications:

MODEL	STDA-7000XLT
Capacity	7,000 lbs
Max. Lift Height Top of Runway	81-1/2"
Max. Lift Height Bottom of Runway	77-1/2"
Overall Length Including Ramps	221-1/2"
Column Height	93"

Overall Width	111"
Drive-Thru Width	98-1/2"
Runway Width	19"
Width Between Runways	38"
Runway Length	180"
Drive On Ramp Length	36"
Latch Style	Manual
Standard Motor	110V*

**3 Drip trays are made in China*

**220V available on request*

**Specifications Subject to Change Without Notice*

Available Colors:

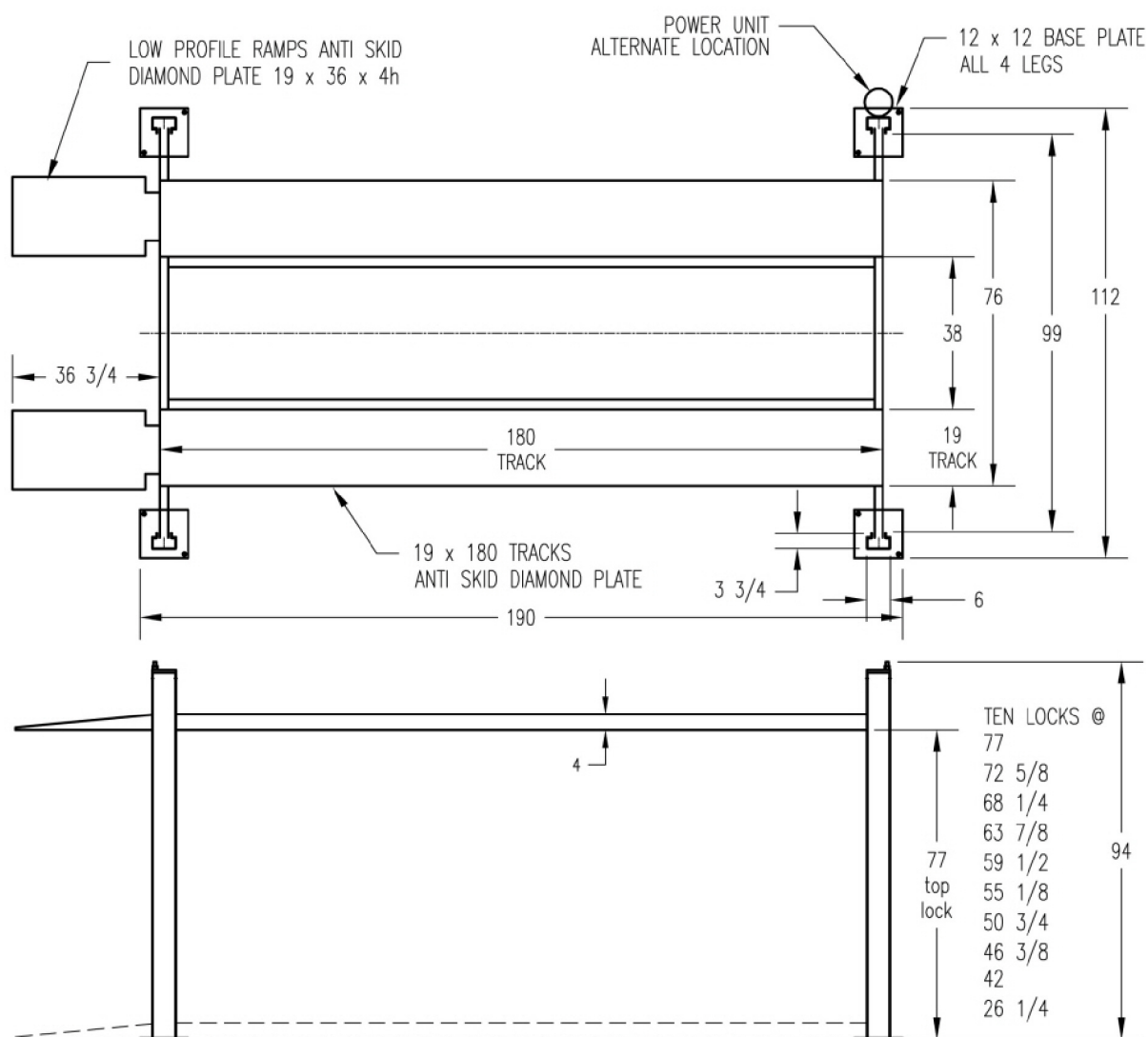


DARK RED 90 GLOSS	RED 90 GLOSS	SAFETY ORANGE 90 GLOSS	YELLOW 90 GLOSS
P009-RD02	T009-RD01	T009-OG01	T009-YL71



FS 17308 BLACK 90 GLOSS	ANSI 61 GRAY 80 GLOSS	RAL 7035 GRAY 90 GLOSS	BLUE 90 GLOSS
T009-BK12	T008-GR736	T009-GR230	T009-BL01

REV	DATE	DESCRIPTION
-----	------	-------------



CAPACITY 7000lbs
110v 1 hp 30 amp single phase
OR - 220v 2 hp 30 amp single phase
POWDER COAT FINISH, WHEEL STOPS,
10 LOCKING POSITIONS FOR VERSATILITY AND SAFETY

OPTIONS -CASTER KIT:
ALUMINUM RAMPS: Light weight, easily removable.
JACK TRAY: Great for tire and brake work.
DRIP TRAYS: Protects the lower cars.
SOLID DECK: Great for any type of storage.
KEY SWITCH: No one can use your lift unless you want them to.

11.18.04 SPECIFICATIONS SUBJECT TO CHANGE WITHOUT NOTICE OR LIABILITY



SPECIFICATIONS

STDA-7000xlt

DATE: 7.22.03

SCALE:

RQD:

P/N

P 0705 000

REV

TOL: FRACT $\pm 1/16$.XX $\pm .020$.XXX $\pm .005$